



**EMERSH**  
ENGINEERING  
DELIVERING TECHNOLOGY SOLUTIONS

## About Us

**EMERSH ENGINEERING** is a manufacturing company of high-quality Specified Product manufacturing experience.

We take immense pride in our products with a dedicated team of professionals in the Design & Development of instrumentation Valves & Fittings under high pressure and temperature environments at the most competitive pricing in the Industry. We are specialized in manufacturing High & Medium Pressure Valves, Needle Valves, Ball Valves, Double Ferrule Fittings, Pipe Fittings, Check Valve / NRV, Valves Manifold, Thermowell, Pressure Regulators & allied accessories.

A total TQM approach: Quality assurance process in place in order to streamline all Procedures & Practices in our operations to achieve extremely high standards of efficiencies. Each manufactured product goes through extreme rigours of stage-wise quality check educing repeat orders from our clients in the field of Oil & Gas Industries, Water Treatment Plants, Pharma Industries, Automation Machineries, Hydraulic Press & Power Packs, Pollution Control Equipments, Marine, Petrochemical and Power Generation application.



### Experience:

We offer a wide range of services to our clients. We are the one-stop solution for all your valves & fittings requirement. Our experience will help our customer to get the accurate desired solutions effectively.



### Mission:

The mission of EMERSH ENGINEERING is committed to fulfill our customers expectation by serving them appropriate products and very timely service. Our vision is a long term commitment to the industry and our customers, which is possible through our collective experience and our belief in honesty, integrity, reliability, long standing relationships and trust.



### Vision:

The vision of company is based on its value of continuous innovation, undying commitment and elaborate customer interaction. The company strives to provide the best possible solution to the customer by listening and understanding the various needs of the customer.



### Quality:

Materials are checked through approved and authorised laboratories, with complete component traceability and documentation, following valve testing as per ANSI-B16.5 using test method by air, hydrogen and helium.

We have policy of continues improvement and are constantly focusing on upgrading our products with a view to enhancing their performance.

# TUBE FITTINGS

- Compression type Double ferrule tube fittings
- The Double ferrule optimize sealing and tube gripping function to provide excellent leak-tight connection
- Available in SS304L/SS316L, Monel, Hastelloy, Inconel & Duplex
- Variety of thread type: NPT, BSPT, ISO, SAE
- Sizes: 1/8"~1" pipe thread & 3mm~25mm O.D.
- Material Traceability



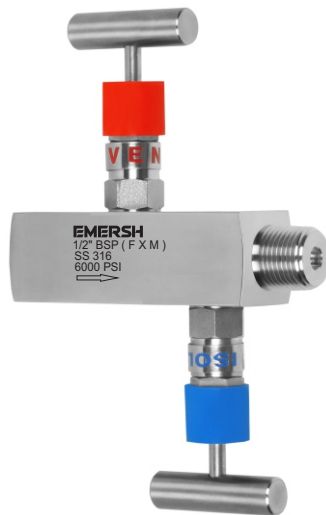
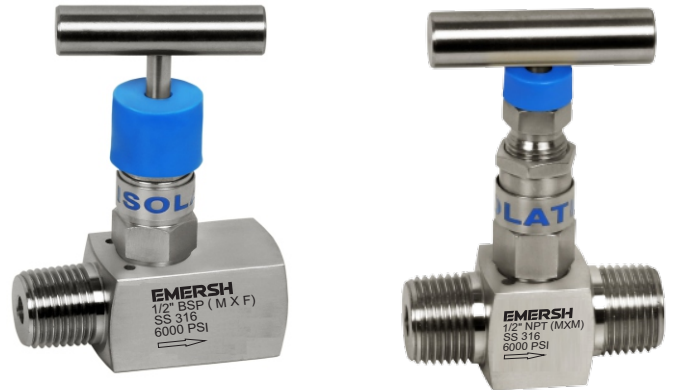
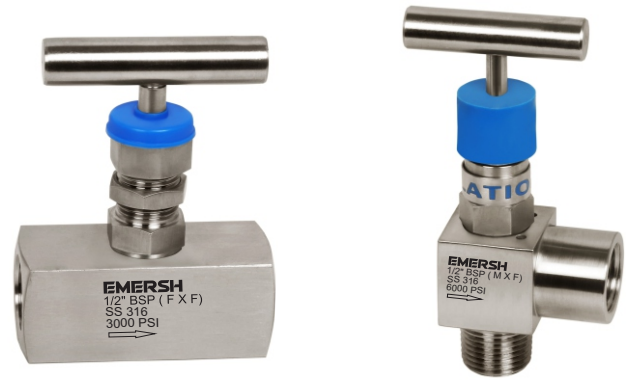
# PIPE FITTINGS

- Used for process control and instrumentation Connections
- Precision machined from forgings for shaped fittings and from bar stock for straight connectors
- Available in SS304L/SS316L, Monel, Hastelloy, Inconel & Duplex
- Variety of thread type: NPT, BSPT, ISO, SAE
- Male threads are capped for protection
- Sizes: 1/8"~2" pipe.
- Material Traceability



# NEEDLE VALVES & GAUGE ROOT VALVES

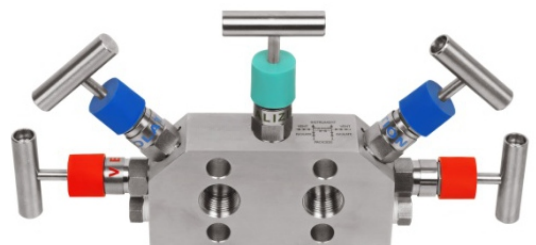
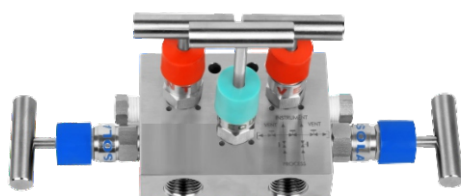
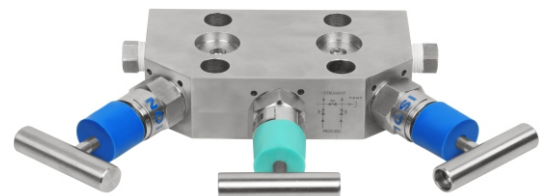
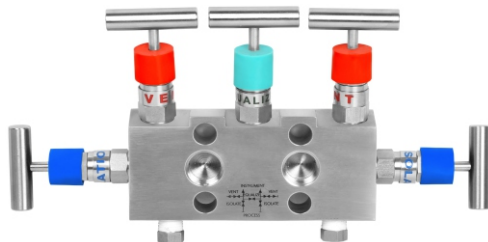
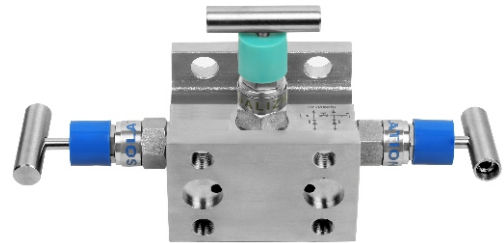
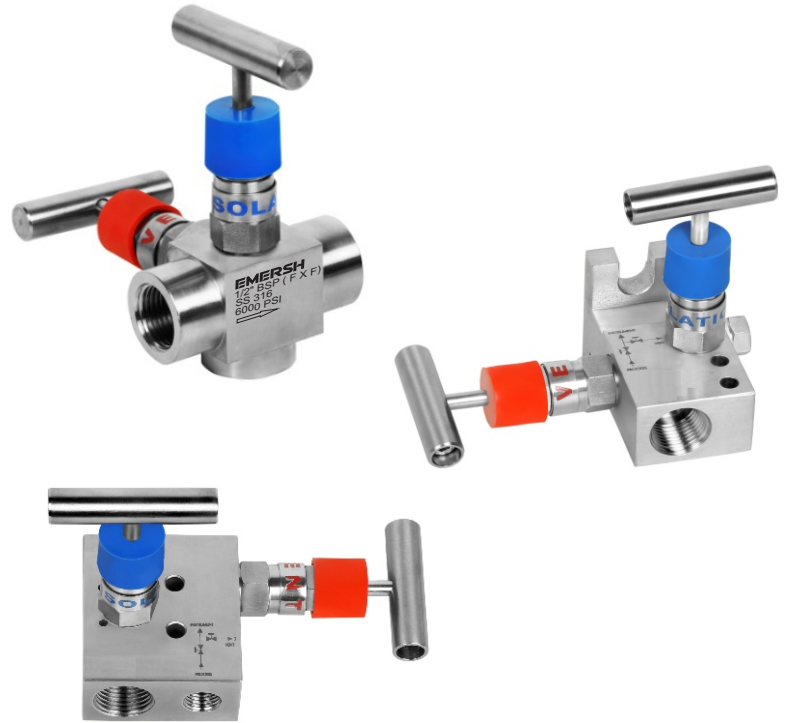
- Maximum Working Pressure up to 10000 psi (689 bar)
- Working Temperature:  
up to 464°F (240°C) with PTFE packing  
up to 842°F (450°C) with Graphite packing
- Available in SS304L/SS316L, Monel, Hastelloy, Inconel & Duplex
- Adjustable packing to extend service life.
- Size: 1/4 ~2" pipe thread 3~25mm OD, 1/8" ~1" OD
- Leak tight performances testing for every valve with nitrogen/ air at the maximum working pressure
- Panel Mountable(optional)
- Low Operating Torque
- Forged Body Straight & angle pattern.
- 100% factory tested
- Material Traceability





# MANIFOLD VALVES

- Maximum Working Pressure up to 10000 psi (414 bar)
- Working Temperature:  
-65°F (-54°C) to 464°F (240°C) with PTFE packing  
-65°F (-54°C) to 842°F (450°C) with Graphite packing
- Available in SS304L/SS316L, Monel, Hastelloy, Inconel & Duplex
- Available with Pipe to Pipe, Pipe to Flange, Flange to Flange, Remote, Remote Mounting base
- Vent, Direct and Integral Mounting
- Standard Non-rotating trim
- Low Operating Torque
- One piece high strength bar stock and forged body
- 100% factory tested
- Material Traceability



## TC END VALVES

- Maximum Working Pressure up to 3000 PSI
- Working Temperature:  
-65°F (-54°C) to 464°F (240°C) with PTFE packing
- Available in SS304L/SS316L, Monel, Hastelloy, Inconel & Duplex
- Low Operating Torque
- 100% factory tested
- Material Traceability



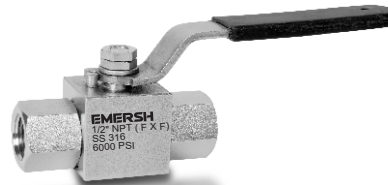
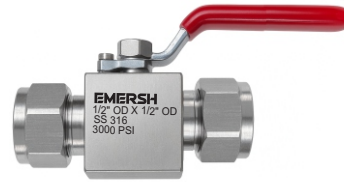
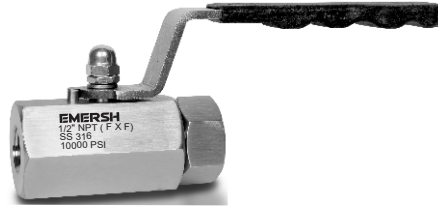
## CHECK VALVES

- Maximum Working Pressure up to 10000 psi (689 bar)
- Working Temperature:  
-10°F (-23°C) to 392°F (200°C) with Viton 'O' ring
- Available in SS304L/SS316L, Monel, Hastelloy, Inconel & Duplex
- Variety of thread type: NPT, BSPT, ISO, SAE
- Size: 1/8 ~2" pipe thread 3~25mm OD, 1/8"~1" OD
- Instant shut off in upstream Condition.
- Compact Design
- 100% factory tested
- Material Traceability



# BALL VALVES

- Maximum Working Pressure up to 10000 psi (689 bar)
- Working Temperature:
  - up to 212°F (100°C) with Delrin packing
  - up to 464°F (240°C) with PTFE packing
  - up to 842°F (450°C) with PEEK packing
- Available in SS304L/SS316L, Monel, Hastelloy, Inconel & Duplex
- Size: 1/4 ~2" pipe thread, 3~25mm OD & 1/8"~1" OD
- Leak tight performances testing for every valve with nitrogen/ air at the maximum working pressure
- 100% factory tested
- Panel Mountable(optional)
- Low Operating Torque
- Floating ball design for positive sealing
- Material Traceability
- Compact design
- Single piece design and Three piece design
- 2 Way, 3 Way & 5 Way



# RELIEF SAFETY VALVES

- Maximum Working Pressure up to 6000 psi (414 bar)
- Working Temperature from -22°F (-30°C) to 392°F (200°C)
- Available in SS304L/SS316L, Monel, Hastelloy, Inconel & Duplex
- Size: 1/4" ~1" pipe thread  
6mm ~25mm OD, 1/4"~1" OD
- Set Pressure from 10 to 6000 psi (3.4 to 414 bar)
- Multiple springs for a wide range of set pressure
- Easy external pressure adjustment
- Label identifies the set pressure range
- 100% factory tested
- Material Traceability



# THERMOWELLS

- Available in SS304L/SS316L, Monel, Hastelloy, Inconel & Duplex
- Various range - Threaded, Flanged, Socket weld, Tapered & Straight
- Instrument connection - 1/2" NPT / NPSM.
- Insertion length (U) up to 28"
- One piece construction
- Other thread sizes available upon request
- Material traceability.



# PHARMA FITTINGS

- available in SS304/L, SS316/L
- Available with a variety of porting and material options.





## FLARE FITTINGS

- Available in SS304L/SS316L, Monel, Hastelloy, Inconel & Duplex
- Material traceability.



## HYDRAULIC FITTINGS



# FORGED FITTINGS

■ Available in SS304L/SS316L, Monel, Hastelloy, Inconel & Duplex



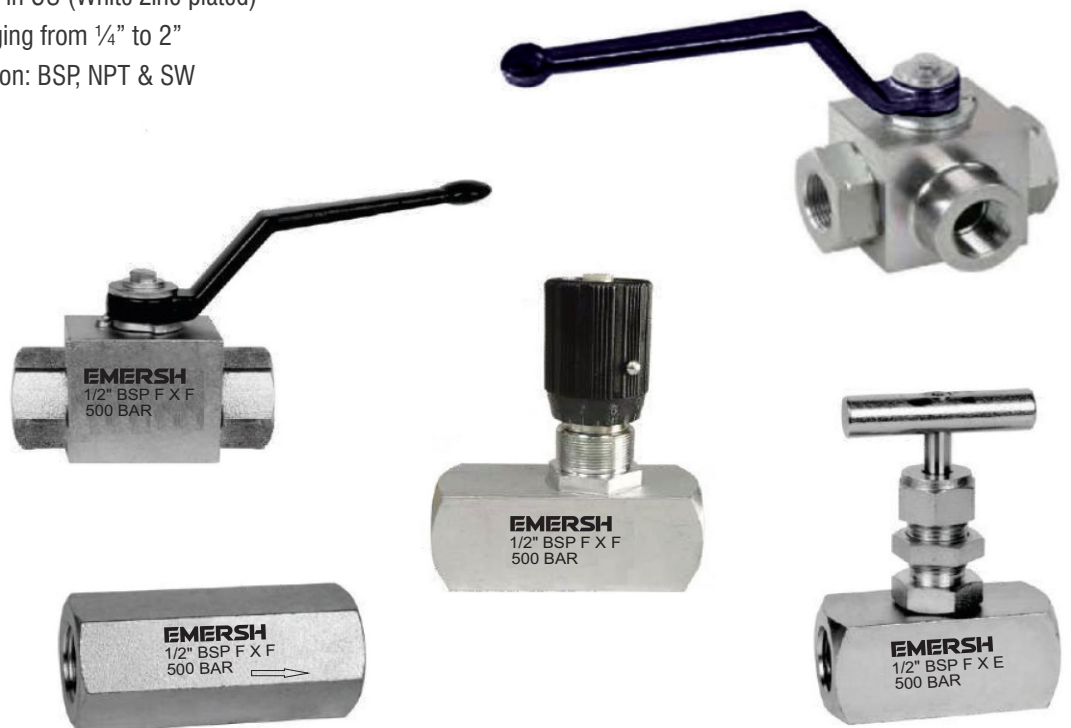
# TUBES

- Available in SS304L/SS316L, Monel, Hastelloy, Inconel & Duplex



# HIGH-PRESSURE VALVES

- Maximum Working Pressure 500 bar
- Available in CS (White Zinc plated)
- Size ranging from 1/4" to 2"
- Connection: BSP, NPT & SW



# EMERSH

## ENGINEERING

### DELIVERING TECHNOLOGY SOLUTIONS

#### **HEAD OFFICE**

# U4, Upper Ground Floor, Mittal Chamber, Pan bazar, Ranigunj,  
Secunderabad, Hyderabad T.S. 500003 India  
Email: info@emershengineering.com, emershengineering@gmail.com  
Tel.: +91 7905539016 / +91 9554367244

#### **MANUFACTURING UNIT**

# Richard Compound, Vasai phata, Vasai(E)  
Palghar, Maharashtra - 401208 India  
Email: info@emershengineering.com,  
emershengineering@gmail.com  
Tel.: +91 7905539016 / +91 9554367244

#### **BRANCH SALES OFFICE**

# B/0, Ground Floor, Haji Colony, Tandon Marg,  
Near Sitapur Bypass, Lucknow - 226003 (U.P)  
Email: info@emershengineering.com,  
emershengineering.lko@gmail.com  
Tel.: +91 9519119811 / +91 9554367244

#### **Authorised Sales Office**

##### **VANGUARD ARABIA TRADING COMPANY**

# P.O.BOX 20049, Cross No. 2, Prince Mohammad Street, Al-Khobar 34429  
Kingdom Of Saudi Arabia  
Email: Sales@vanguardarabia.com,  
Tel.: +966-13 8053348  
Website: www.vanguardarabia.com

##### **IMPORTANT NOTICE:**

- The product data in this catalogue was obtained under specific test conditions that may vary substantially from actual site conditions and / or customer needs.
- Purchasers or other end users of our products should rely solely on their system design engineers while selecting products for a particular system, and when determining the suitability of any system in which our product is to be installed.
- The company shall bear no liability regarding product selection criteria or decisions, nor shall be liable (including direct, special or consequential damages including, but not limited to, lost profits or income) in regard to any product which has been damaged by misuse, improper handling or accident, or as a result of service or modification by anyone other than an authorized employee or agent of our company, or being subjected to use under conditions, or combinations of conditions, that are not compatible with that particular product.

*For Dealership franchises please feel free to contact us.*

[www.emershengineering.com](http://www.emershengineering.com)